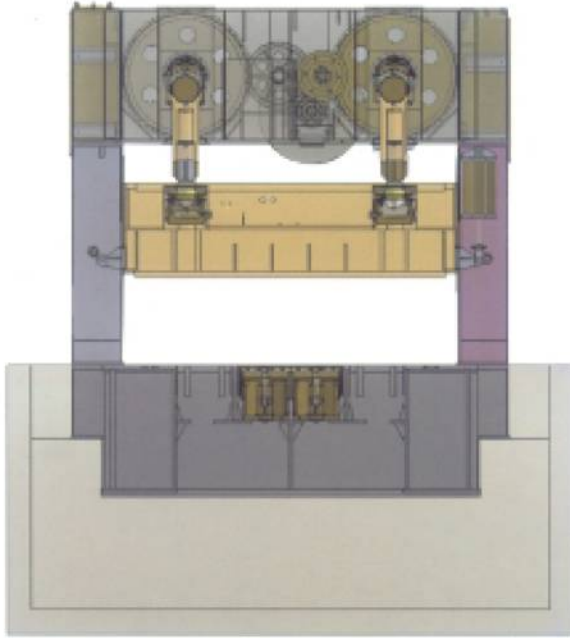




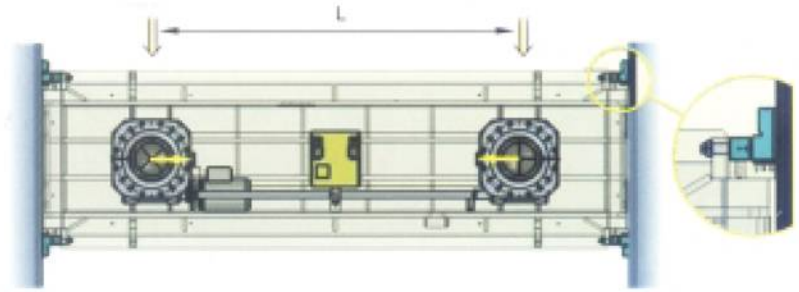
STRAIGHT SIDE DOUBLE CRANK POWER PRESSES



SXP-2 & SXP-2/T Series



Tie rod structure for minimal deflection accurate parts and machine durability



EIGHT POINT GUIDING ARRANGEMENT :

The extra-long eight point guiding system fully supports the slide through its entire stroke. The guiding system permits the precise adjustment of slide running clearances and also helps achieve parallelism and squareness of travel, thus improving tool life.



scan for website

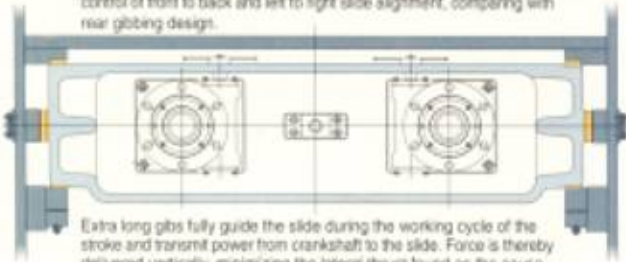
SPECIFICATIONS FOR SXP-2(T) SERIES POWER PRESS

Model		SXP-2-315(T)	SXP-2-400(T)	SXP-2-500(T)	SXP-2-600(T)
Capacity	tonne	315	400	500	600
Fix Stroke	mm	300	300	350	350
SPM (Fix)	spm	25	22	20	20
SPM (Variable)	spm	20-30	15-26	12-24	12-22
Tonnage Rating Point	mm	8	8	9	10
Die Height	mm	550	600	650	650
Slide Adjustment	mm	200	200	200	200
Slide Area (Std)	mm	2100 X 1100	2100 x 1100	2100 x 1200	2100 x 1200
Slide Area (Optional)	mm	2800 X 1100	2800 X 1100	2800 X 1200	2800 X 1200
Bolster Area (Std)	mm	2500 X 1400	2500 x 1400	2500 x 1500	2500 x 1500
Bolster Area (Optional)	mm	3100 X 1400	3100 X 1400	3100 X 1500	3100 X 1500
Bolster Thickness	mm	200	200	220	250
Main Motor (Fix)	(HP X P)	30 X 4	40 X 4	50 X 4	50 X 4
Main Motor (Variable)	(HP X P)	40 X 4	50 X 4	60 X 4	60 X 4
Slide Adjustment Motor	KW	1.5	2.2	2.2	2.2
DIE CUSHION					
Type		Bellow	Piston-Cyl.	Piston-Cyl.	Piston-Cyl.
Capacity	tonne	14 X 2 - 28T	20 X 2 - 40T	20 X 2 - 40T	20 X 2 - 40T
Stroke Length	mm	140	150	150	150
Pad Area	mm	700 X 540 X 2	900 X 600 X 2	900 X 600 X 2	900 X 600 X 2



Extra Long, Precise, 6-Point, Centered Box Type Gibbing

Box type centered gibs assure accurate slide guiding, providing full control of front to back and left to right slide alignment, comparing with rear gibbing design.

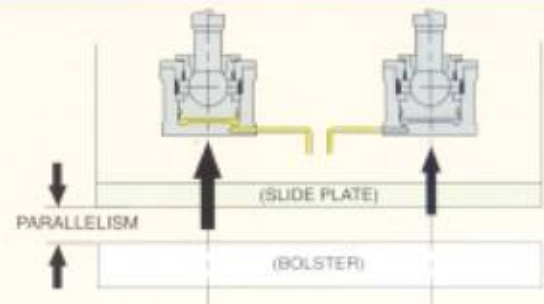


Extra long gibs fully guide the slide during the working cycle of the stroke and transmit power from crankshaft to the slide. Force is thereby delivered vertically, minimizing the lateral thrust found as the cause of friction in the gibs, and off-center loads.

FEATURES

- ❖ The symmetrical front -rear column structure design resists deflection and provides accurate pressings and prolonged tool life.
- ❖ Highly rigid structure ensures consistent dynamic precision and zero angle deflection of frame and REDUCED NOISE and VIBRATION.
- ❖ Increases flexibility in press working and operability.
- ❖ Applicable for single and progressive die application in blanking, piercing, berling, forming, interlink with transfer unit

Parallelism Maintained During Offset Loads



If unequal loads are applied across the slide, full oil pressure from the overload system is applied where required to retain the parallelism between slide plate and bolster for consistent quality of pressings and extended tooling life.



STANDARD ACCESSORIES

- ❖ Motorised Grease Lubrication
- ❖ Hydraulic Overload Protection System
- ❖ Dual Solenoid Valve
- ❖ Motorised Slide Adjustment with Die Height Indicator
- ❖ Air Counter Balancer System
- ❖ Digital Crank Angle Indicator
- ❖ Misfeed Sockets
- ❖ Air Outlet
- ❖ Operating Stand

OPTIONAL ACCESSORIES

- ❖ Die Cushion
- ❖ Photoelectric Safety Device
- ❖ Variable Speed Motor
- ❖ Load Tonnage Monitor
- ❖ Quick Die Change System
- ❖ Anti Vibration Mounts

SPECIFICATIONS FOR SXP-2 SERIES POWER PRESS

Model		SXP-2-160	SXP-2-200	SXP-2-250	SXP-2-315	SXP-2-400	SXP-2-500
Capacity	tonne	160	200	250	315	400	500
Fix Stroke	mm	200	220	250	300	300	300
SPM (Fix)	spm	40	35	30	30	25	20
SPM (Variable)	spm	30-50	25-45	25-40	20-40	20-30	12-24
Tonnage Rating Point	mm	6	7	7	7	7	9
Die Height	mm	450	500	550	550	600	650
Slide Adjustment	mm	100	100	120	120	150	175
Slide Area (Std)	mm	1560X 650	1850 X 750	2100 X 820	210 X 900	2200 x 1000	2200 x 1000
Slide Area (Optional)	mm	----	1850 X 900	2100 X 1100	2500 X 1000	2500 X 1000	2800 X 1000
Bolster Area (Std)	mm	1850 X 760	2200 X 840	2500 X 920	2500 X 1100	2500 x 1100	2500 x 1100
Bolster Area (Optional)	mm	----	2200 X 1000	2500 X 1200	2800 X 1200	2800 X 1200	3100 X 1200
Bolster Thickness	mm	160	170	180	200	200	220
Main Motor (Fix)	(HP X P)	15 X 4	20 X 4	25 X 4	30 X 4	40 X 4	50 X 4
Main Motor (Variable)	(HP X P)	20 X 4	25 X 4	30 X 4	40 X 4	50 X 4	60 X 4
Slide Adjustment Motor	kw	0.75	1.5	1.5	1.5	2.2	2.2
DIE CUSHION							
Type		Bellow	Bellow	Bellow	Bellow	Piston-Cyl.	Piston-Cyl.
Capacity	tonne	8 X 2 - 16T	10 X 2 - 20T	14 X 2 - 28T	14 X 2 - 28T	20 X 2 - 40T	20 X 2 - 40T
Stroke Length	mm	110	130	140	140	150	150
Pad Area	mm	560 X 370 X 2	700 X 450 X 2	700 X 540 X 2	700 X 540 X 2	900 X 600 X 2	900 X 600 X 2

THE MANUFACTURER RESERVES THE RIGHTS TO MODIFY DESIGN, SPECIFICATIONS, MECHANISM, ETC. TO IMPROVE THE PERFORMANCE OF THIS MACHINE WITHOUT NOTICE.

SINGHAL POWER PRESSES PVT. LTD.

CORP. OFFICE : 201-202, KARMA STAMBH INDUSTRIAL ESTATE, LBS MARG, NEAR HOME TOWN, 24/7, VIKHROLI (W), MUMBAI-400 083
TEL.: 67242000, 25784515 FAX : 91-22-25798809, 67969652 E-mail : info@sewpresses.com Web : www.sewpresses.com

PLANT : NH 8B, OPP. FIELD MARSHAL SCHOOL, SHAPAR, DIST. RAJKOT TEL.: 02827-252358, 253381 FAX : 02827-253278

SALES OFFICES

BENGALURU :

603 - A, Mittal Tower, M. G. Rd.,
BENGALURU-560 001
Tel.: 25587728
Telefax : 080-25594143

CHENNAI :

143, Angappa Naicken St.,
CHENNAI-600 001
Tel.: 25221246
Telefax : 044-25221245

FARIDABAD :

53, 1st Floor,
Neelam Flyover Market,
FARIDABAD-121001
Tel.: 0129-2420150

PUNE :

18, Soham Industrial Complex,
Plot No. 318, Sector -10,
Near Times of India, Bhosari, Chinchwad,
Pune-411010 Tel.: 9619776951

VADODARA:

282 / 1 / A, GIDC,
Makarpura,
BARODA-390010
Telefax : 0265-2641121