



SNX-250



CROSS SHAFT POWER PRESS

SNX Series

SINGHAL

SINGHAL SNX Series

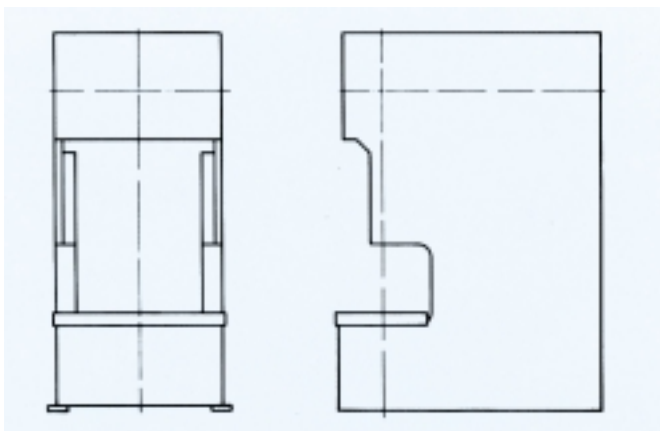


SINGHAL SNX Series



Even more accurate, Even more dynamic - The Power Presses that raise **standard's** of precision & rigidity

- REDUCED NOISE AND VIBRATIONS.
- MINIMAL FRAME GAPPING, LOW ANGULAR DEFLECTION < 1.5
- HIGH RIGIDITY FRAME AND BOLSTER.
- HIGH PRECISION FORMING FOR LONGER DIE LIFE.
- HI-TORQUE PNEUMATICALLY OPERATED SINGLE DISC COMBINED CLUTCH & BRAKE UNIT.
- GEAR TRANSMISSION RUNS IN OIL BATH.
- WIDE SLIDE AND BOLSTER AREA.

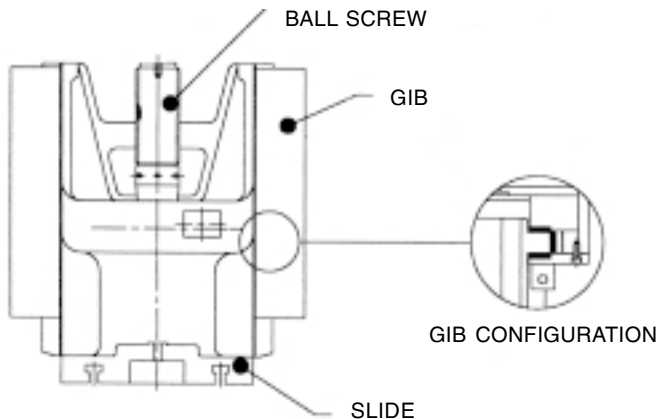


FRAME & BOLSTER

HIGHLY RIGID FRAME & WIDE POINT SPACING

The highly rigid frame, slide & bolster hold the frame gap opening, frame elongation & bed deflection to the absolute minimum. The wide point spacing enables these presses to withstand eccentric loads.

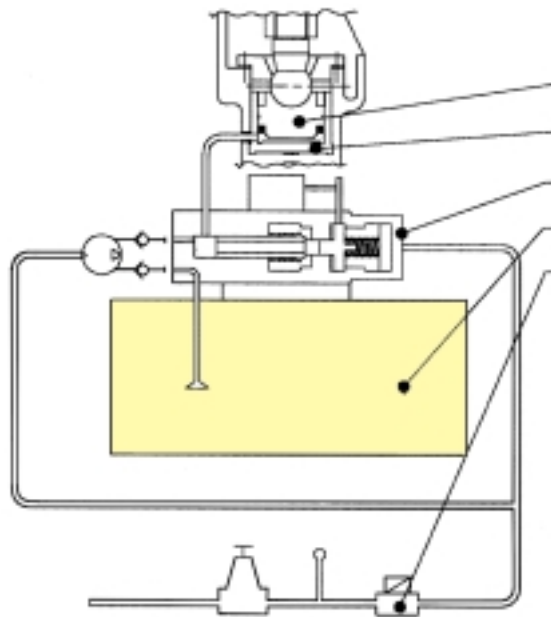
SINGHAL SNX Series



6 POINT **EXTRA LONG** GIBS DULY FITTED WITH SINTERED BRONZE LININGS

THE MECHANISM THAT ENSURES HIGH PRECISION

The high quality power shaft is employed to give outstanding torsional rigidity. Long 6 point gibs, ensure that accuracy is maintained for a very long time. Die life is also greatly extended.



HYDRAULIC OVERLOAD SAFETY

- PISTON
- HYDRAULIC CYLINDER
- O.L.P. DEVICE
- OIL TANK
- OIL REGULATOR UNIT

A built-in hydraulic overload protection (OLP) system completely ensures press and tool safety during any overload situation. As soon as the load exceeds the set value, the OLP device will release the hydraulic pressure and at the same time stop.

STANDARD ACCESSORIES

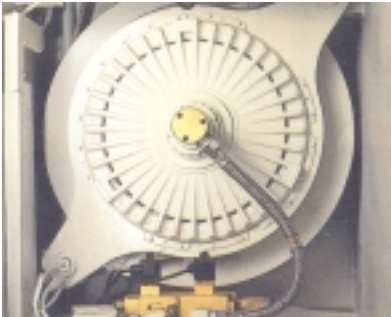
- ISI marked electric motor with electrical control panel
- Mitsubishi PLC with Fault Finding HMI fitted on Front Console
- Motorized Grease Pump
- Hydraulic overload safety
- 8 way imported rotary cam limit switch
- Dual solenoid valve
- Die height indicator
- Motorized Slide Adjustment (SNX 63 & above)
- Anti Repeat Safety Device

- Pneumatic balancers
- Production Counter
- 2 nos Mis-feed Socket

OPTIONAL ACCESSORIES

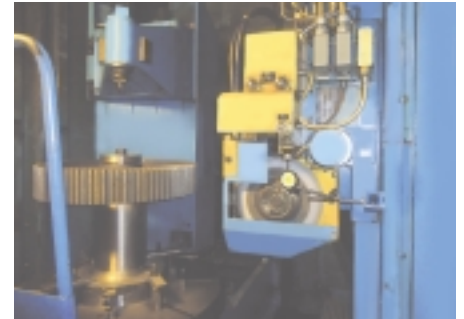
- Pneumatic Die Cushoin
- Wet Clutch
- Photo Electric Safety Device
- Variable speed with VFD motor
- Quick Die Change System
- Foot Switch
- Decoilers, Straightners & Feeders

SINGHAL SNX Series



Clutch / Brake and Drive Unit

Pneumatic combination clutch-brake unit ensures shorter braking time with automatic synchronisation of clutch and brake to enhance operator safety and noiseless operation.



High Precision Transmission Gear Duly Ground

The high accurately machined gear system provides smooth and silent operation.

Motorised Slide Adjustment

Easy to use motorised slide adjustment with digital display is provided as standard on SNX- 63 to 250 models. The die height is displayed in units of 0.1 mm for precise slide adjustment.



Quick Die Change System (Optional)

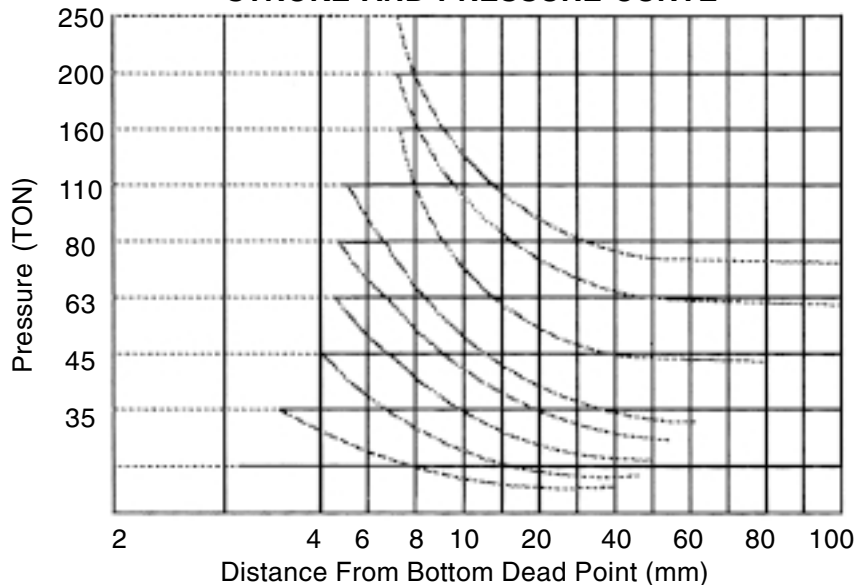
In order to save time for the die change and ensure the safety of the operation, it is just in time to apply quick die change system.



Mitsubishi Smartline Fault Finding HMI fitted on Front Panel

This is very useful for the operator and the supervisor as it displays information incase of any Fault also displays Batch Counter, Preset Counter, Time Totalizer, Lubrication Counter, Anti-Repeat Timer.

STROKE AND PRESSURE CURVE

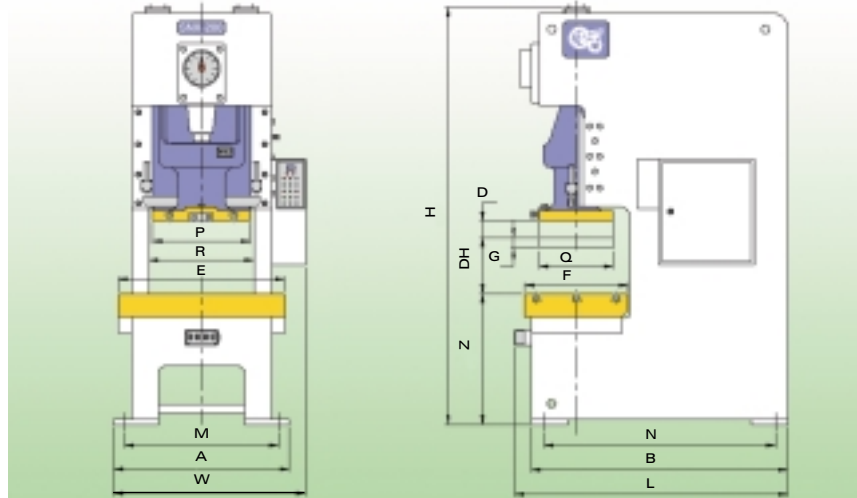


RATING POINT

MODEL	STROKE (MM)	TONNAGE RATING POINT (MM)
SNX-35	80	3.5
SNX-45	88	4.0
SNX-63	100	5.0
SNX-80	100	5.0
SNX-110	160	5.0
SNX-160	200	6.3
SNX-200	220	6.3
SNX-250	250	6.3

SINGHAL

SNX Series



TECHNICAL SPECIFICATIONS

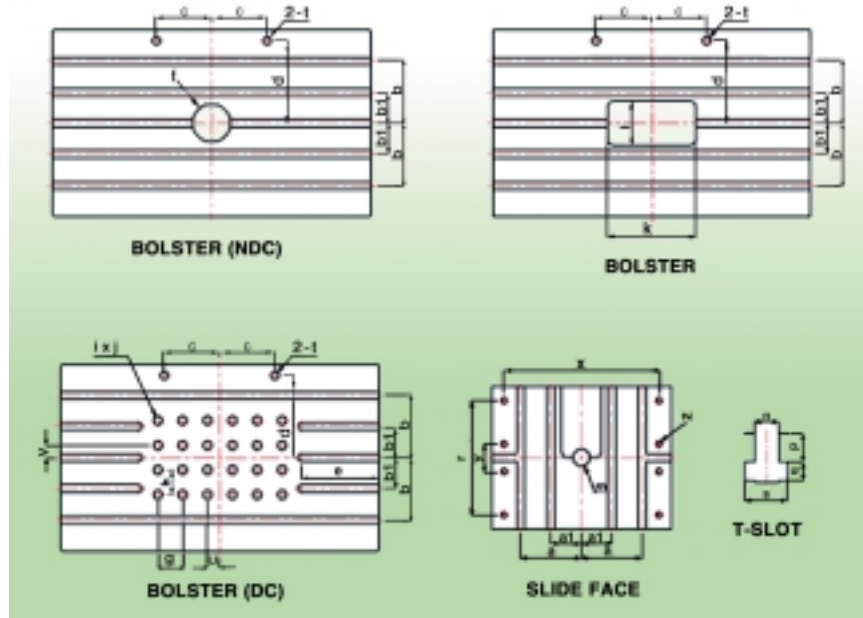
Model	SNX-35			SNX-45			SNX-63			SNX-80		SNX-110		SNX-160		SNX-200		SNX-250		
	NG	HG	SG	NG	HG	SG	NG	HG	SG	HG	SG	HG	SG	HG	SG	HG	SG	HG	SG	
TONNE	35			45			63			80		110		160		200		250		
FIX STROKE (D)	MM	40	40	90	50	50	110	50	50	130	60	150	70	160	80	200	90	220	100	250
ADJUSTABLE STROKE	MM	8-40	8-40	8-88	8-50	8-50	8-88	8-50	8-100	8-60	8-100	8-70	8-125	-	8-160	-	-	-	-	20-160
SPM(FIX)	SPM	150	130	80	140	120	70	130	100	60	100	60	80	50	80	40	65	35	55	30
SPM (VARIABLE)	SPM	100-200	80-170	60-90	100-180	80-160	50-80	100-160	70-150	40-70	60-130	40-70	60-120	35-60	50-100	30-50	40-80	25-45	30-70	25-40
RATING POINT	MM	1.2	2.3	3.2	1.5	2.3	3.2	1.5	2.3	4	3	4.5	3	5	3.5	6	3.5	6	4	6
DIE HEIGHT (D H)	MM	250			270			300			330		360		400		450		450	
SLIDE ADJUSTMENT (G)	MM	50			60			70			80		90		100		110		120	
SLIDE AREA (PxQ)	MM ²	380 x 300			430 x 350			500 x 400			560 x 460		650 x 520		720 x 580		860 x 650		960 x 720	
TOOL BORE (Ø)	MM	50.8			50.8			50.8			50.8		63		65		80		80	
BOLSTER AREA (ExF)	MM ²	780 x 400			840 x 440			900 x 520			1050 x 600		1150 x 680		1250 x 760		1400 x 840		1500 x 900	
BOLSTER THICKNESS	MM	85			110			120			140		140		160		180		180	
FLOOR TO TOP OF BOLSTER (Z)	MM	800			800			860			900		900		900		1000		1000	
CLEAR DIST BETN. UPRIGHTS (R)	MM	490			495			580			620		670		760		900		940	
MAIN MOTOR (HP X P)	FIX	3 x 4			5 x 4			7.5 x 4			7.5 x 4		10 x 4		15 x 4		20 x 4		25 x 4	
	VARIABLE	5 x 4			7.5 x 4			10 x 4			15 x 4		15 x 4		20 x 4		25 x 4		30 x 4	
SLIDE ADJ. MOTOR	KW	--			--			0.4			0.4		0.4		0.75		1.5		1.5	
FOOT SIZE FIX (AxB)	MM	830x1130	830x1130	830x1130	855x1245	855x1295	860x1290	890x1420	990x1420	990x1420	1030x1475	1030x1475	--	1160x1680	1300x1985	1300x1985	1480x2140	1480x2140	1610x2460	1610x2460
FOOT SIZE ADJUSTABLE (AxB)	MM	830x1220	830x1130	830x1130	855x1245	855x1315	855x1315	--	990x1420	990x1420	1030x1475	1030x1475	--	1160x1680	--	1300x1985	--	1480x2140	--	1610x2460
POSITION OF ANCHOR BOLTS FIX (MxN)	MM	740x1010	740x1010	740x1030	765x1125	765x1175	770x1195	890x1180	890x1180	890x1350	930x1345	930x1355	--	1060x1380	1180x1655	1180x1655	1360x1755	1360x1755	1470x2060	1470x2060
POSITION OF ANCHOR BOLTS ADJUSTABLE (MxN)	MM	740x1100	740x1010	740x1030	765x1125	765x1195	765x1215	--	890x1180	890x1350	930x1345	930x1355	--	1060x1380	--	1180x1655	--	1360x1755	--	1470x2060
FLOOR SPACE REQUIRED FIX (W x L x H)	MM	1230x1430 x2225	1230x1430 x2150	1230x1430 x2180	1255x1545 x2350	1255x1595 x2255	1260x1590 x2285	1390x1720 x2600	1390x1720 x2540	1390x1770 x2600	1430x1775 x2700	1430x1775 x2765	--	1560x1980 x3015	1700x2285 x3250	1700x2285 x3330	1880x2440 x3650	1880x2440 x3730	2010x2760 x3990	2010x2760 x4080
FLOOR SPACE REQUIRED ADJUSTABLE (W x L x H)	MM	1230x1520 x2255	1230x1430 x2170	1230x1430 x2195	1255x1545 x2370	1255x1615 x2245	1260x1590 x2265	--	1390x1720 x2575	1390x1770 x2600	1430x1775 x2680	1430x1775 x2765	--	1560x1980 x3015	--	1700x2285 x3330	--	1880x2440 x3730	--	2010x2760 x4080
DIE CUSHION																				
Capacity	Tonne	3.5			3.5			6			6		8		10		14		14	
Stroke Length	mm	50			50			70			70		90		100		110		120	
Pressure Pad Area	mm	300 x 210			300 x 210			380 x 260			410 x 260		480 x 300		540 x 340		640 x 440		740 x 540	

NG : Ungearred Series

HG : High Speed Geared Series

SG : Standard Geared Series

SINGHAL SNX Series



DIMENSIONS OF BOLSTER & SLIDE AREA

MODEL	SNX-35	SNX-45	SNX-63	SNX-80	SNX-110	SNX-160	SNX-200	SNX-250
a	130	140	150	180	180	260	300	320
a1	--	--	--	--	--	160	170	180
b	125	140	150	180	210	290	320	320
b1	--	--	--	--	--	165	180	200
c	130	150	150	150	200	200	200	200
d	170	185	200	250	300	340	380	410
e	210	220	250	270	280	290	320	320
f	Ø110	Ø130	Ø150	Ø180	Ø140	Ø220	Ø250	Ø270
g	65	75	75	75	90	100	100	100
h	90	100	100	100	90	100	100	100
i (R.LxF.B)	5x3	5x3	5x3	5x3	6x4	6x4	7x5	7x5
j	Ø26	Ø26	Ø26	Ø26	Ø30	Ø32	Ø32	Ø32
k	220	260	300	360	400	440	500	540
l	110	130	150	180	200	220	250	270
m	Ø50.8	Ø50.8	Ø50.8	Ø50.8	Ø63	Ø65	Ø80	Ø80
n	18	22	22	28	28	28	28	28
p	22	27	27	28	28	28	28	28
q	14	18	18	22	22	22	22	22
r	--	--	--	--	--	480	550	--
s	32	40	40	50	50	50	50	50
t	Ø26	Ø26	Ø26	Ø26	Ø30	Ø30	Ø30	Ø30
u	--	--	--	--	45	50	--	--
v	--	--	--	--	45	--	--	--
x	340	370	400	480	560	630	750	--
y	70	80	90	90	100	130	140	--
z	4-Ø18	4-Ø18	4-Ø18	4-Ø18	4-Ø22.5	8-Ø22.5	8-Ø23	--

SINGHAL SNX Series

- **SEW with automation line**
SEW press provides the most reliable and accurate equipment.
- **High productivity press for automating**
multi-process with large batch small quantity.
- **Multi-station safety sensor perfectly**
protects the tooling and reduces manual failure.
- **Multi-feeding system design for**
customer's great convenience.



scan for website

SINGHAL POWER PRESSES PVT. LTD.

CORP. OFFICE : 201-202, KARMA STAMBH INDUSTRIAL ESTATE, OPP. MTNL OFFICE, LBS MARG, VIKHROLI (W), MUMBAI-400 083
TEL.: 67242000, 25784515 FAX : 91-22-25798809, 67969652 E-mail : info@sewpresses.com Web : www.sewpresses.com

PLANT : NH 8B, OPP. FIELD MARSHAL SCHOOL, SHAPAR, DIST. RAJKOT TEL.: 02827-252358, 253381 FAX : 02827-253278

SALES OFFICES

BENGALURU :
603 - A, Mittal Tower, M. G. Road,
BENGALURU-560 001
Tel.: 25587728
Telefax : 080-25594143

CHENNAI :
143, Angappa Naicken Street,
CHENNAI-600 001
Tel.: 25221246
Telefax : 044-25221245

FARIDABAD :
53, 1st Floor,
Neelam Flyover Market,
FARIDABAD-121001
Tel.: 0129-2420150

PUNE :
18, Soham Industrial Complex,
Plot No. 318, Sector -10,
Near Times of India, Bhosari, Chinchwad,
Pune-411010 Tel.: 9619776951